

curved sedum roof. 'The green roof was something we felt hugely passionate about,' says Amy. 'It's a living carpet that changes with the seasons, giving the house a feeling of being wrapped in nature.'

The views are framed by dark-grey aluminium windows, which flood the interior with light and produce impressive solar gain in the summer. This, together with the sedum roof, is part of a range of sustainability features that have been worked into the build. 'We really wanted to be as eco-friendly as we could afford; it was important to us to get away from using fossil fuels,' says Amy.

The couple also decided to install an air source heat pump that absorbs warmth from the air and transfers it to the house. This supplies underfloor heating, which maintains an ambient temperature all year round. 'We haven't had the heating on upstairs as yet,' says Amy happily. 'If it does get chilly we have a wood-burning stove that makes use of the ready supply of logs we have on site.'

Access to the house is gained via a curved porch that cleverly mimics the main roofline and gives way to a large, central entrance that's filled with natural light from three skylights. Off the hall are four bedrooms, a family bathroom and a utility room. Seven-year-old Finbar's and five-year-old Martha's bedrooms are built off the apex of the curve and have high vaulted ceilings with roof lights. 'The children love having downstairs bedrooms,' says Amy. 'Both their rooms have a door set into a projection of the outer wall that not only makes an interesting design feature, but also allows the children to nip in and out to the garden.'

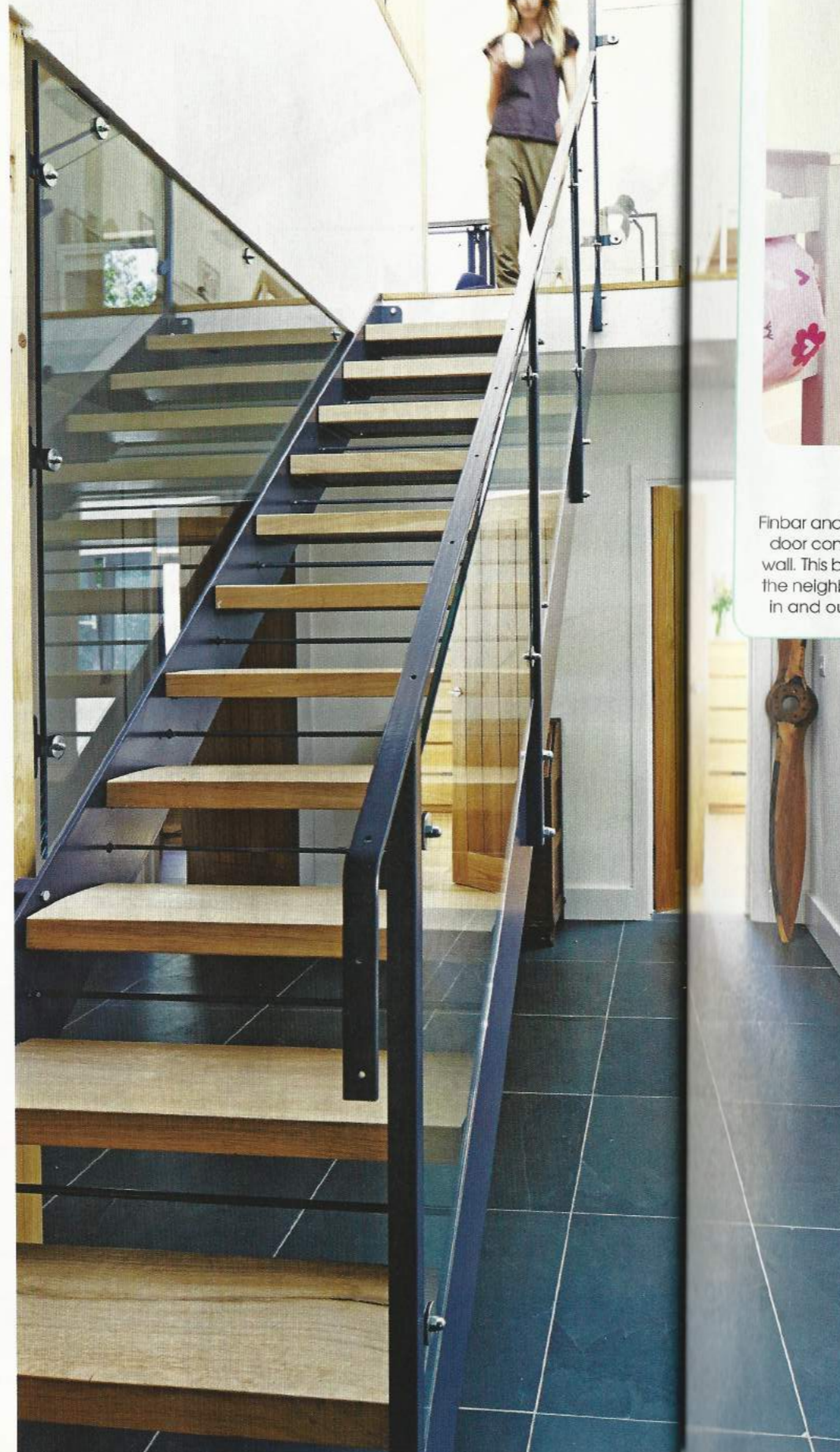
Ascending the stairs, the curved, vaulted ceiling makes a striking canopy over the open-plan kitchen and living room; two sides of the space are lined with bi-fold doors that lead out to a patio and balcony. A wonderful inside-outside living area, the large black sandstone patio is bordered by white retaining walls that include a built-in wood-fired pizza oven and barbecue.

Inside, Amy and Adam's choice of furniture complements the interior space beautifully, with vintage country pieces sitting happily alongside the clean lines of an ultra-modern kitchen. 'We've tried to be selective when dressing the interior,' says Amy. 'It definitely has some Scandi influence, but at the same time we wanted it to work as a comfortable family home.'

A labour of love that has resulted in a striking yet modest house, the project was completed in just twelve months and came in on budget. 'We put the work out to tender ourselves and agreed a fixed price with a local contractor who worked hard in challenging winter conditions to complete the build,' says Amy. 'We then saved money by overseeing tiling, kitchen fitting and decorating ourselves.'

With the challenges of the build now behind them, the family is thoroughly enjoying the space it has created. 'It's a pleasure to come through the front door each day,' says Amy. 'We feel incredibly lucky to have achieved such a grand design on a tight budget. Living Space really took on board what we were trying to achieve with the funds we had and the result is a beautifully formed house that suits all of us perfectly.' **GD**

Amy and Adam used oak from nearby woodland for the treads of their industrial-style staircase



Grand idea



Easy access

Finbar and Martha's bedrooms each have a glazed door concealed behind a projection of the outer wall. This brings in plenty of light without overlooking the neighbours, and also allows the children to nip in and out to the garden whenever they fancy.



All the bedrooms are light and airy and sit on the ground floor

The entrance is sheltered by a wide porch that mimics the shape of the roof

Suppliers

PROJECT TEAM Architect Living Space Architects (01392 270 420; livingspacearchitects.com) Planning consultant Neal Jillings (07880 186 795; jillings-heyne.com) Structural engineer Ballantine Arnold (01548 559 031; ballantinearnold.co.uk) Builder AD Williams (01752 840 961; adwilliamsconstruction.co.uk) **STRUCTURE** Zinc and slate roof Western Counties Roofing (01626 835 937; westerncountiesroofing.co.uk) Guttering Lindab (01626 835 032; lindab.com) Sedum roof ANS Global (01243 545 818; ansgroupglobal.com) Staircase First Choice Metalworks (07896 134 926) Aluminium windows Nordic Installations (01752 695 850; nordicinstallations.com) Cladding Siberian larch sourced by AD Williams (as before) Roof lights Velux (01592 778 225; velux.co.uk) Air source heat pump Samsung (0330 726 7864; samsung.com) Black sandstone patio slabs World of Stone (01363 82598; world-of-stone.co.uk) **FIXTURES & FITTINGS** Kitchen Magnet (magnet.co.uk) Kitchen worktop Jenkins Stone (01626 334 567; jenkinsstone.co.uk) Bathrooms Bathstore (bathstore.com) Wood-burning stove Charnwood C4 from Rangemoors (01837 680 068; rangemoors.co.uk) Tiles Nova Natural Stone (07969 203 824; novanaturalstone.co.uk) **FURNITURE & ACCESSORIES** Cooker Rangemaster (01837 680 068; rangemoors.co.uk) Cooker hood Rangemaster (as before) Cow hide City Cows (020 7099 6616; citycows.co.uk)



'We feel incredibly lucky to have achieved such a grand design on a tight budget'